

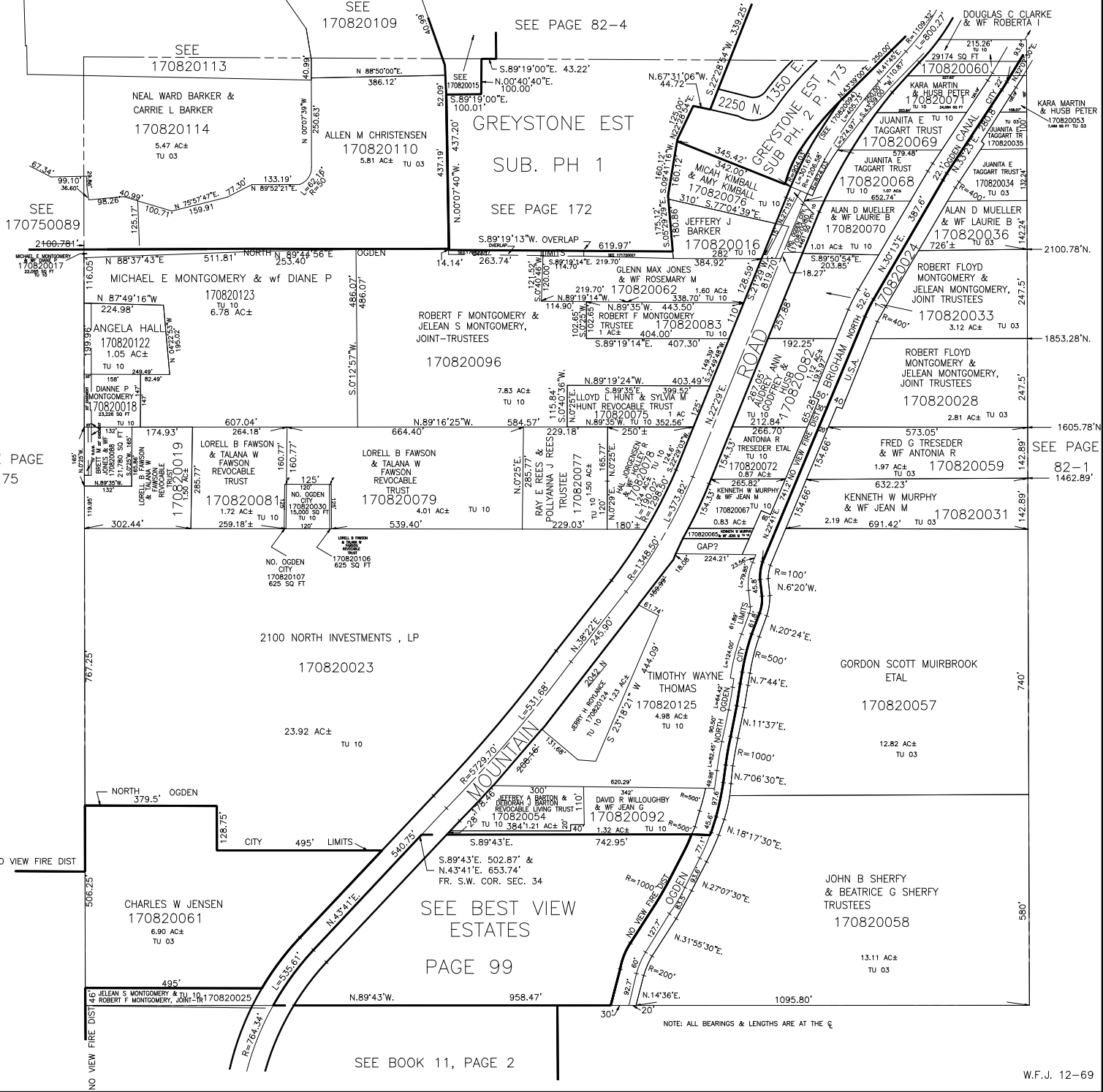
S.W. 1/4 OF SECTION 34, T.7N., R.1W., S.L.B. & M.

IN NORTH OGDEN CITY & WEBER COUNTY

SCALE 1" = 200'

ALSO SEE PAGE 82-4

TAXING UNIT: 03, 10



SEE PAGE 175

SEE PAGE 75

SEE BOOK 11, PAGE 2

SEE PAGE 172

SEE PAGE 172

SEE PAGE 172

SEE PAGE 172

SEE PAGE 172

SEE PAGE 172

SEE PAGE 172

SEE PAGE 172

SEE PAGE 172

SEE PAGE 172

SEE PAGE 172

SEE PAGE 172

SEE PAGE 172

SEE PAGE 172

SEE PAGE 172

SEE PAGE 172

SEE PAGE 172

SEE PAGE 172

SEE PAGE 172

SEE PAGE 172

SEE PAGE 172

SEE PAGE 172

SEE PAGE 172

NOTE: ALL BEARINGS & LENGTHS ARE AT THE C

SEE PAGE 82-1 1462.89'